



Global Power Synergy Public Company Limited

Corporate Procedure

GPSC Group Biodiversity Procedure

Contents

	Page
1. Objective.....	3
2. Scope	3
3. Terms and definitions.....	3
4. Roles, duties and responsibilities.....	3
5. Process details.....	4

1. Objective

This document describes the procedures for managing biodiversity and ecosystem services of the GPSC group, including roles of responsible persons.

2. Scope

The Biodiversity Management Process and Ecosystem Services GPSC Group applies to business units of GPSC or applied to the following companies in the GPSC group:

- All business groups / each GPSC business group
- Companies in the GPSC group according to the management principles within the GPSC group (GPSC Way of Conduct)
- Companies that are required by GPSC to comply on a case by case basis For example, operations that have a high level of risk / impact on biodiversity or are required by the laws of the country in which the company is located. Such companies may be companies in which GPSC Group has a majority stake or a contractor or contractor company.

3. Terms and definitions

Term	Definition
QSHE department operating areas (SSHE Site)	Security, Safety, Occupational Health and Environment in Map Ta Phut Area (HEM) and security, safety, occupational health and environment in other areas (HGM).
QSHE Corporate	Organization System Quality Management (SQM).

4. Roles, duties and responsibilities

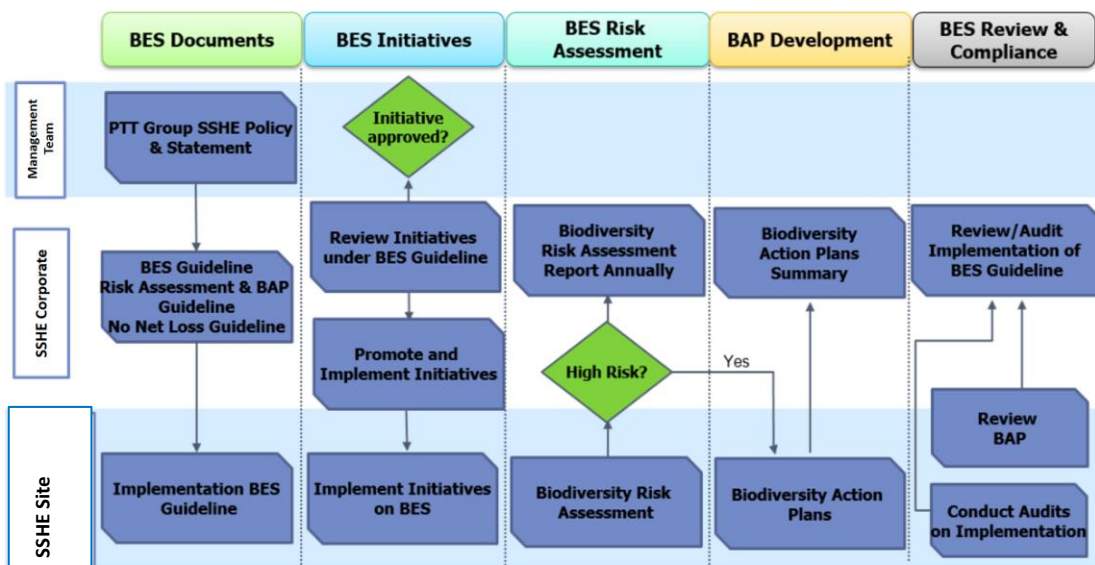
The main structure and function of the relevant departments within the management structure of the GPSC Group are shown as follows:

No	Activities	Responsible persons
1	Developing and announcing the GPSC Group strategies and biodiversity, as well as ecosystem service practices and guidelines.	SSHE Corporate

2	Setting the biodiversity and ecosystem service goals of the GPSC Group in line with the strategic goals.	SSHE Corporate, SSHE Site
3	Developing projects under the Biodiversity and Ecosystem Services Action Guidelines at GPSC and the GPSC Group.	SSHE Site
4	Develop and advise on strategic operations, biodiversity and ecosystem services.	SSHE Corporate, SSHE Site
5	Monitoring, assessing and reviewing the efficiency and effectiveness of biodiversity and ecosystem service operations to identify development opportunities and present them to the Executive Committee.	SSHE Corporate, SSHE Site
6	Studying and assessing the risks of biodiversity and ecosystem services.	SSHE Site
7	Providing information in drafting a biodiversity action plan.	SSHE Site
8	Working in accordance with the requirements of the biodiversity action plan.	SSHE Site
9	Following-up and assessing the performance of biodiversity.	SSHE Corporate, SSHE Site

5. Process details

Implementation procedures in accordance with the GPSC Group Biodiversity Management Framework are detailed schematic diagrams of the operational procedures for managing biodiversity and service ecosystems, which are as follows:



5.1 Establishing Guidelines and Procedures

1. SSHE Corporate establishes guidelines to define operational frameworks and management guidelines that take into account the importance of biodiversity and ecological services. This will promote the GPSC Group in achieving its goals and in accordance with the GPSC Group Biodiversity Management Intent, as well as to establish a Procedure to explain the procedures involved.
2. Request for approval to declare use of “Guidelines” and “Procedures”.
3. Review “Guidelines” and “Procedure” regularly.

5.2 Establishing programs to support biodiversity operations

1. The SSHE Site has created programs to support biodiversity operations to achieve its goals and in order to be in line with the GPSC Group Biodiversity Management Intent, such as through assessing loss in biodiversity in new areas (No Net Loss Assessment).
2. Ask for approval and report progress with the management team.
3. Perform performance reviews regularly.

5.3 Biodiversity Risk Assessment

1. The SSHE Site collects information for use in risk assessments as required by the risk tool.
2. Conduct biodiversity risk assessments and ecosystem services in GPSC operating areas, including new development projects and mergers and acquisitions.

3. In cases of areas with high biodiversity and ecosystem service risk assessments, a biodiversity action plan is required. (Biodiversity Action Plans: BAPs) to reduce risks in all areas from occurring.
4. Collect the results of risk assessments of operational areas.

5.4 Establishing Biodiversity Action Plans

1. SSHE Corporate reports the results of risk assessments to management of the operating area, who then has to formulate a biodiversity action plan (Biodiversity Action Plans: BAPs).
2. SSHE Site conducts a biodiversity action plan (Biodiversity Action Plans: BAPs) to reduce risks in all areas that may occur with the support of SSHE Corporate.
3. The SSHE Site provides a database of species listed for the conservation and protection of the country (National Conservation List Species), as well as endangered species on the Red List of the Union for Conservation of Nature (IUCN Red List Species) located in operation areas.
4. SSHE Site summarizes the results of the Biodiversity Action Plans (BAPs).

5.5 Monitoring and measuring

1. The SSHE Site regularly reviews and assesses the risks of actions it may take on biodiversity.
2. SSHE Site continually reviews and updates the biodiversity action plans of all GPSC Group businesses each year.
3. SSHE Corporate maintains a comprehensive data collection and reporting system and demonstrates the performance contributing to biodiversity management in a consistent and integrated manner into existing internal and external reporting systems, as well as those included in the preparation of the annual sustainable development report of the GPSC and PTT Group.